



7 hatnufa st, P.O.Box 32 Tirat Carmel, 30250 Israel Tel: 972 (4) 857 4370 Fax: 972 (4) 857 1459  
e mail: military@source-vagabond.com

SOURCE LOGO is a registered trademark. X-Straps™ strapping systems, Wet-Cross™ strapping systems,  
DURABAG® Hydration Technology Z-Valve and Storm-Valve™ are U.S & International registered patents.

[WWW.SOURCE-MILITARY.COM](http://WWW.SOURCE-MILITARY.COM)



# MILITARY HYDRATION SYSTEMS

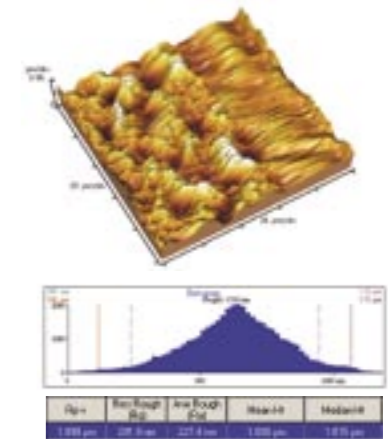
**SOURCE®**  
[WWW.SOURCE-MILITARY.COM](http://WWW.SOURCE-MILITARY.COM)

# IN THE HEAT OF BATTLE HYDRATION IS ESSENTIAL

AS SMOOTH AS IT GETS

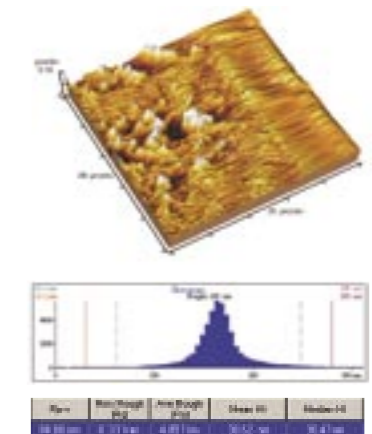
Atomic Force Microscope (AFM) surface analysis of a 100x100 microns surface shows incontestably that Source's Glass-Like™ film is 1000% smoother than the leading competitor's PU film and only 50% different from glass itself.

Surface analysis of a the competitor PU film



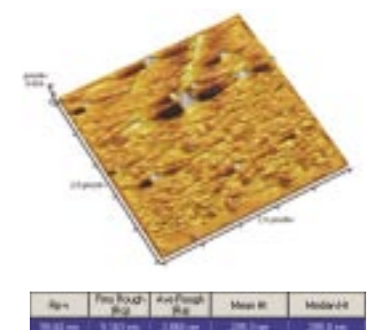
Rms Roughness of 291.8 nm

Surface analysis of SOURCE Glass-Like™ film



Rms Roughness of 26.85 nm

Surface analysis of glass



Rms Roughness of 5.163 nm

## WHY SOURCE

**GENUINE INNOVATION** Source's technologies virtually eliminate the issue of cleaning, delivering water that's fresh and safe.

**CREATING NEW STANDARDS** We're developing procedures to scientifically evaluate hydration performance, helping militaries to build better specs.

**FAST RESPONSE** We can provide custom made hydration samples in as little as two weeks!

**DESIGNED BY SOLDIERS** Designed by soldiers. Source's head designer and much of its key personnel are ex- officers in the IDF elite forces.

**CREDIBILITY** In the last year, several major armies have switched to Source from other hydration brands.

**COMBAT PROVEN** Hundreds of thousands of Source systems are in use, with many field tested in the most extreme conditions.

## WHAT MAKES US DIFFERENT

**GLASS LIKE™ LINER** Glass-Like™ Liner technology in the reservoir and tube delivers pure liquid taste with no plastic flavor.

**GRUNGE GUARD™** Grunge-Guard™ Antimicrobial technology blocks bacterial growth. Embedded into the reservoir and tube, Grunge-Guard™ is effective for the life of the system.

**CARE FREE™ SYSTEM** Glass-Like™ Liner technology with Grunge-Guard™ antimicrobial technology eliminates the need for cleaning. For days, weeks and even months of use, simply refill and drink again and again with no special care required.

## WHAT COUNTS

**When it comes to on-the-move hydration systems:**

- The Safety of the drinking water
- The taste of the drinking water
- Easy cleaning -Reduced maintenance
- Long life cycle
- User friendliness
- Modularity
- Integration with other personal gear
- Performance under extreme weather and combat conditions
- The ability to drink while breathing heavily
- High flow rate
- Durability
- NBC filtration and purification compatibility

## DRINKING FROM A RELIABLE SOURCE

**Why your drinking water should come from a highly reliable SOURCE.**

Bacteria, mold, yeast and algae are facts of life; however they can endanger your health when rapidly growing and dividing in a medium such as drinking water.

Bacteria grow by clinging to a surface and creating a bio-film that allows them to flourish and become potentially dangerous.

A liquid container with a smooth contact surface such as glass reduces the ability of this bio-film to form. There are no irregularities on the surface for bacteria to cling to and the regular flow of water self-cleans the container.

Source has developed a unique plastic film that has a Glass-Like™ surface. Source is the only hydration system using this film. (see "As smooth as it gets")

**On top of that...**

Source has innovated Grunge-Guard™, a unique anti-microbial technology, and integrated it into all films and tubes. Grunge-Guard™ utilizes an FDA approved agent that blocks bacteria growth on the tube and reservoir surfaces. Grunge-Guard™ has no effect on the water and is non-leaching. The synergy of the Glass-Like™ plastic film and Grunge-Guard™ gives double protection against bacteria growth. Your drinking water stays fresh, odor and taste-free for days, even weeks! No need to clean, simply refill and drink again and again.

**Other hydration systems require special care... Ours take care of you.**

more about this test at: [www.source-military.com](http://www.source-military.com)

# HYDRATION TECHNOLOGY



## WXPTM HYDRATION SYSTEM

### CO-EXTRUDED TUBE

A sophisticated UV-Block and IR-Reduction insulated cover combines with our antimicrobial co-extruded tube to keep liquid cool and taste/bacteria free from the first sip to the last.

### NO FILLER CAPTM

(51mm in diameter)  
An air-tight low profile large opening. Designed for one hand operation with a swift 270° turn. Compatible with commonly used personal water filters.

### REFILL HANDLE

A lightweight handle for spill-free refills.



### CPC FITTING

CPC Quick Connect Hose Fitting offers push button convenience and seals tight even when reservoir is full. Enables future integration of personal filtration and purification systems.



## DURABAGTM HYDRATION SYSTEM

Durabag® Technology is a crush-proof super strong **bag-within-bag** system and the most durable flexible water container ever made!  
Low cost reservoir replacement!  
(U.S Patent 6,247,619).



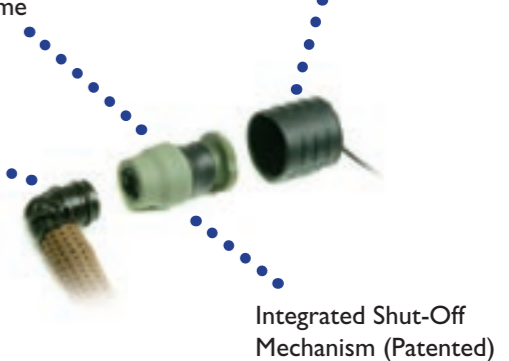
### STORM VALVETM

An angled no-bite push/pull valve specially designed for military applications. Integrated shut-off mechanism locks securely for storage. Soft mouthpiece for comfort. Liquid flow is unmatched, making it ideal for use in highly aerobic activities. Performs in extreme cold weather.

### DIRT SHIELDTM

A tough lightweight cover that keeps the valve dirt-free and protects against damage during transport.

The angled valve allows the tube to be 25cm shorter so there's less excess to hang up or bounce around.  
(U.S.Patent 6,622,988)



### WIDEPACTM CLOSURE

(90mm in diameter)  
A user-friendly slide closure offering wide opening access for easy filling, cleaning, draining or ice cube insertion. Airtight seal. (patent pending)



### GRUNGE GUARDTM

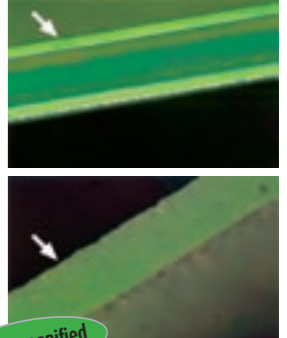
An FDA approved antibacterial permanently embedded into the reservoir and tube to block bacteria growth. Effective for the life of the system. Dramatically reduces cleaning and maintenance.

### GLASS LIKETM LINER

The smoothest polymer ever made and the closest to glass. As with glass, the system is "self-cleaning" since dirt and bacteria can't stick to the reservoir's surface. Maintenance is not an issue- the system stays naturally clean.

up: cross section of SOURCE Glass Like™ PE film showing smooth surface  
bottom: cross section of a competitor PU film

For AFM roughness test results see previous page



X200 magnified

# PACK TECHNOLOGY



## QCATM ATTACHMENT SYSTEM

Connects instantly to vests and packs with no additional straps or hardware required.

For Quick Connect Attachment:

1. Thread the buckle through any loop on gear
2. Snap into QCA™ female buckle
3. Tighten

## DUAL FUNCTION PACK

### Back-carried / Gear-mounted modes

3 simple steps to switch between back-carried and gear-mounted modes:

- 1 Unclip the Quick-Release shoulder strap buckles.
- 2 Fold the shoulder straps into the back pocket.
- 3 Load into a larger pack or 4 mount on gear. (see QCA™ System)



## EXTERNAL ACCESS



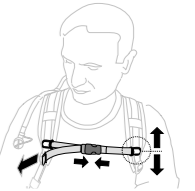
External access for fast and easy refill. Holding the built-in handle controls the flexible pack thus avoiding spills.

## IR REDUCTION

IR reduction fabrics, straps and buckles provide improved safety during low light patrol

## INDIVIDUAL ADJUSTMENT

**Tube** -Tube length is adjusted by sliding the extra tubing back inside the pack. In every Source pack the tube can be routed through the left or right side.



**Shoulder straps**- pull straps are tightened until the pack is stable, then sternum strap height is adjusted to maintain the best positioning.

## ZIPPERED TOP OPENING

Zipper on pack and Widepac™ closure on reservoir allow quick and easy access for cleaning or draining without the need to remove the reservoir from the pack.



## SECUREND™ LOOPS

To keep loose strap ends from dangling, simply roll and insert them under the elastic SecurEnd™ loops.



## VERTICAL ZIPPER

Easy and quick reservoir replacement, personal filtration or NBC drinking system installation.



## COOL INSULATION

5mm closed cell polyethylene foam keeps liquid cool for better absorption by the body.

## MATERIAL

Tough Outer Pack – Durable 1000D Cordura® exterior.

## EASY DRY D RING



With the zippered opening open and Widepac™ closure removed, the pack can be hung upside down for draining and quick drying.



# NBC TECHNOLOGY

## Source NBC technology is VERSATILE.

Depending on specific military doctrines, Source will adjust its system to meet the requirements both to the period our system is used in combat prior to being exposed to NBC (4-16 weeks) and the time our system is used in combat under NBC conditions (6-24 hours).

Our NBC hydration system is tested in accordance with Mil-ST-282 Notice 4, conducted with a live agent.

The DOP test conducted on each Source NBC system shows a protection factor of **99.992 percent** - much higher than the commonly used requirements for gas masks.

Our NBC concept is based on the belief that a system having fewer moving parts and in line components (connectors, adaptors, shut-off valves), is less prone to failure under NBC attack.

We also believe that the less time the system is used under non NBC conditions, the lower the risk that it will fail under NBC attack.

We strongly believe that the concept of one system good for all conditions (NBC and extended everyday non-NBC) is **FALSE!**

### NBC FILLER CAP™

Using a wide surfaced Butyl Rubber sealing gasket allows longer protection against gases creeping in.

### NBC FILM

Our Proprietary multilayer film utilizes the Source superior Glass-Like™ liner, together with a unique barrier layer. This multilayered film ensures a high level of protection against chemical and biological threats while offering the easy to clean and taste-free qualities found in our standard Source reservoirs.

### QC STICKER

This sticker is your assurance that each hydration system was tested and approved for use under NBC conditions.

### SVL™ ADAPTOR

The SVL™ (Source Valve Link) adaptor allows normal drinking (using the Storm Valve) When the NBC hydration system is not in use, the SVL™ accepts the Storm-Valve on one side and is plugged into the GML™ adaptor on the other side. (The SVL™ is available for both NATO and USA type gas masks).

### NBC TUBE

A Proprietary NBC grade Butyl rubber 7X10 mm tube is used to maintain the highest protection standard.

### FLOW CLAMP

A simple, smart external solution to prevent water from flowing back when the gas mask is in use.

### GML™ ADAPTOR

The GML™ (Gas Mask Link) adaptor allows drinking with a protective gas mask on. The male plug in the gas mask's drinking tube is plugged into the Source GML™.



## WARNING

Users of our NBC hydration systems must be specially trained in chemical warfare as well as in the correct usage of these products.

SOURCE NBC Hydration products are not available for personal or retail purchase.

Only authorized government agencies may purchase these products.

### NBC TRAINING

NBC Training is accomplished through our separately sold NBC training kit. In NBC training, the soldier unplugs his standard tube and plugs in his NBC training tube. To use with a protective gas mask, the male plug on the tip of gas masks' drinking tube should be plugged into the GML™ (Gas Mask Link). For normal use during the NBC training, The SVL™ (Source Valve Link) is plugged into the GML™, allowing the soldier to use the normal Storm Valve and Dirt Shield valve cover.

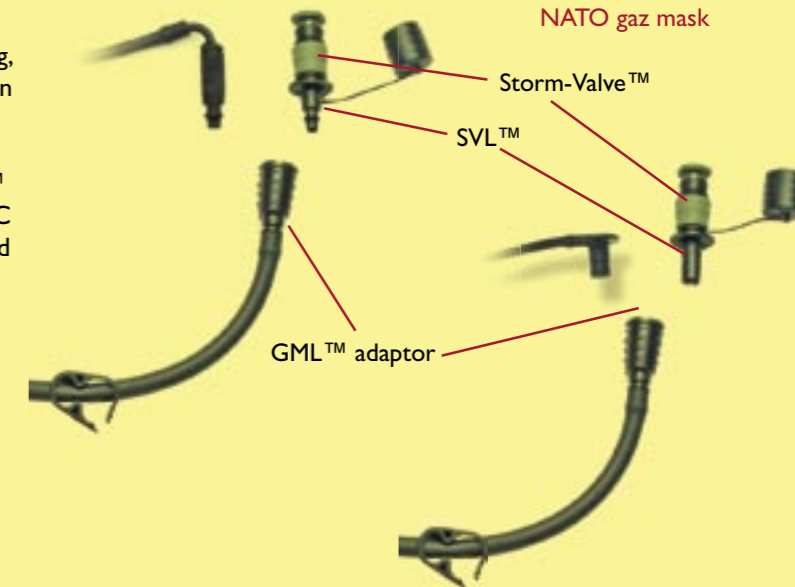
Source offers two types of GML™ adaptors:

The **U.S. GML™** fits U.S. Army gas masks M17, M40, M70 Series and MCUZP C4 (Canada).

The **NATO GML™** fits NATO gas masks S10, FN12 and JSGPM- XM50.

U.S. gaz mask

NATO gaz mask



SOURCE Military Range 2006 (Product listed on GSA)											
Model+ Category	cat. #	Color	Hydration System	Tube / Valve*	Cargo Capacity		Liquid Capacity		Weight		
					L	cu in	L	oz	Kg	Lbs	
<b>41 Cargo Hydration Packs</b>											
PATROL	41 01 03 11	US Desert	WXP	WC 94 LBSV	35	2138	3	100	2.01	4.44	
	41 01 03 01	Black									
	41 01 03 02	Coyote									
	41 01 03 03	Olive Darb									
COMBAT	41 02 03 11	US Desert	WXP	WC 94 LBSV	20	1222	3	100	1.57	3.31	
	41 02 03 01	Black									
	41 02 03 03	Olive Darb									
ASSAULT	41 03 03 11	US Desert	WXP	WC 94 LBSV	10	611	3	100	1.38	3.05	
	41 03 03 01	Black									
	41 03 03 02	Coyote									
	41 03 03 03	Olive Darb									
<b>40 Hydration Packs</b>											
US/1 3L	40 10 03 11	US Desert	WXP	WC 94 LBSV			3	100	0.59	1.3	
	40 10 03 01	Black									
	40 10 03 02	Coyote									
	40 10 03 03	Olive Darb									
TACTICAL 2L	40 11 02 11	US Desert	WXP	WC 94 LBSV			2	70	0.51	1.13	
	40 11 02 01	Black									
	40 11 02 02	Coyote									
TACTICAL 3L	40 11 03 11	US Desert	WXP	WC 94 LBSV			3	100	0.53	1.17	
	40 11 03 12	US Woodland									
	40 11 03 01	Black									
	40 11 03 02	Coyote									
STRIKE 3L	40 12 03 01	Black	DURABAG	WC 94 LBSV			3	100	0.44	0.97	
	40 12 03 02	Coyote									
	40 12 03 03	Olive Darb									
	40 12 03 01	Black									
TRANSPORTER 2L	40 13 02 01	Black	WXP	WC 94 LBSV			2	70	0.44	0.97	
INSOTAINER 10	40 15 10 11	US Desert	WXP	WC 110 LBSV			10	340	0.68	1.5	
	40 15 10 03	Olive Darb									
<b>42 Tankers</b>											
WRAPTANK 3L	42 10 03 11	US Desert	WXP	WC 94 LBSV			3	100	0.38	0.84	
	42 10 03 02	Coyote									
	42 10 03 03	Olive Darb									
<b>44 NBC Hydration</b>											
US NBC Hydration System 3L	44 01 03 00	Transparent Olive	CLEAR	Butyl R. Tube			3	100	0.21	0.46	
NATO NBC Hydration System 3L	44 02 03 00	Transparent Olive	CLEAR	Butyl R. Tube			3	100	0.21	0.46	
US NBC Training kit	44 10 00 01								0.09	0.2	
NATO NBC Training kit	44 20 00 01								0.09	0.2	
<b>45 Milspec Hydration Packs</b>											
UK/3 TACTICAL 3L NSN # 8465-99-842-7034	45 02 03 23	UK Woodland DPM	WXP	WC 94 LBSV			3	100	0.56	1.24	
SE T/1 LC 2.5L	45 10 25 03	Olive Drab	WXP	WC 94 LBSV			2.5	85	0.47	1.04	
D/1 TACTICAL 2L	45 20 02 01	Black	WXP	WC 94 LBSV			2	100	0.5	1.1	
D/1 TACTICAL 3L	45 21 03 24	German Woodland	WXP	WC 94 LBSV			3	100	0.56	1.24	
USMC TACTICAL 3L NSN # 8465-01-531-1753	45 50 03 02	Coyote 498	WXP	WC 94 LBSV			3	100	0.61	1.35	
US Army TACTICAL 3L	45 51 03 30	US Universal Camo	WXP	WC 94 LBSV			3	100	0.61	1.35	
IR ASSAULT Pack	45 30 03 25	Irish Woodland	WXP	WC 94 LBSV	10	611	3	100	1.38	3.05	
IDF/3 WRAPTANK 3L	45 40 03 03	Olive Drab	WXP	WC 94 LBSV			3	100	0.49	1.08	
IP/1 TRANSPORTER 2L	45 41 02 04	Navy Marine Blue	WXP	WC 94 LBSV			2	70	0.44	0.97	
<b>46 Replacement parts</b>											
WXP Hydration System 2L	46 01 02 00	Transparent Olive	WXP	WC 94 LBSV			2	70	0.22	0.49	
WXP Hydration System 3L	46 02 03 00	Transparent Olive	WXP	WC 94 LBSV			3	100	0.24	0.53	
WXP Hydration System 10L (Insotainer)	46 10 10 00	Transparent Olive	WXP	WC 110 LBSV			10	340	0.43	0.95	
Clear Hydration System 3L (Strike)	46 11 03 00	Transparent Olive	CLEAR	WC 94 LBSV			3	100	0.21	0.46	
Tube Kit (with Storm Valve)	46 20 00 11	US Desert		WC 94 LBSV					0.75	1.66	
	46 20 00 01	Black									
	46 20 00 02	Coyote									
	46 20 00 03	Olive Darb									
Storm Dirt- shield™	46 31 00 01								0.01	0.02	
Z-Bite Valve Kit	46 32 00 01			LBZV					0.01	0.02	
NC Filler cap	46 50 00 01								0.03	0.07	
Widpac™ clousur	46 51 00 01								0.02	0.04	
<b>47 Hydration Accessories</b>											
Tube Brush clean kit	47 30 00 55								0.07	0.15	
<b>48 Personal Dry Bags</b>											
Sealflex Neck	48 10 80 00	Transparent Olive			0.8	49			0.08	0.18	
Sealflex Waist	48 11 50 00	Transparent Olive			0.5	31			0.10	0.22	
<b>18 SOURCE Sandals</b>											
	## = Size of sandal		Sole	Bag color			Size Range		Weight		
							Euro	USA	Kg	Lbs	
Mojave Men's	18 01 11 ##	Eucalyptus	Gravity	Green Bud			40-46	7-12	0.63	1.39	
	18 01 00 ##	Black									
Gobi Men's	18 02 00 ##	Black	Gravity	Blue bird			40-46	7-12	0.66	1.46	
Classic women's	11 11 00 ##	Black	Car Tire	Royal			36-42	5-10	0.47	1.04	

\* WC= weave cover 94 = length of tube in cm LBZV= Z-bite valve on LBO LBSV=Storm Valve on LBO